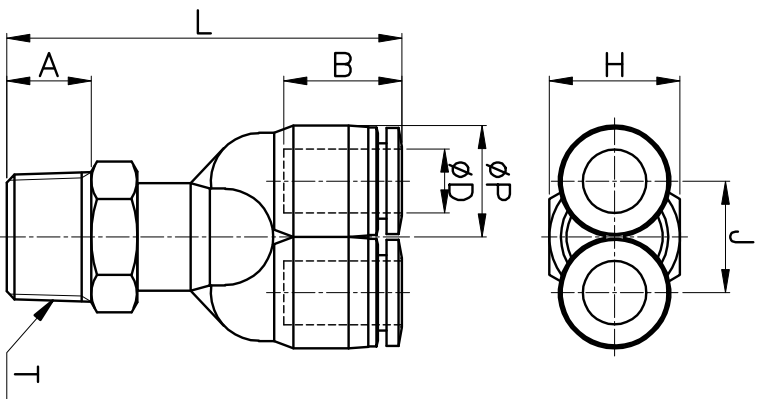


# PWT



MODEL	$\phi D$	$\phi P$	T	L	J	A	B	H (Hex)	ORIFICE	WEIGHT (g)	BOX(EA)
PWT 04-M5	4	10.5	M5*0.8p	39.4	10.5	4.0	15.5	10	2.5	11.0	100
PWT 04-M6			M6*1.0p	39.5		4.1		10	11.0	100	
PWT 04-01			R 1/8	43.4		8.0		10	12.0	100	
PWT 04-02	6	12.5	R 1/4	45.4	12.5	10.0	16.9	14	3.0	18.0	100
PWT 04-03			R 3/8	46.4		11.0		17	27.0	50	
PWT 06-M5			M5*0.8p	40.4		4.0		12	16.0	50	
PWT 06-M6	8	14.5	M6*1.0p	40.5	14.5	4.1	18.6	12	3.0	16.0	50
PWT 06-01			R 1/8	44.4		8.0		12	17.0	50	
PWT 06-02			R 1/4	47.4		10.0		14	22.0	50	
PWT 06-03	10	17.6	R 3/8	48.4	17.6	11.0	20.3	17	4.0	32.0	50
PWT 06-04			R 1/2	51.4		14.0		21	54.0	25	
PWT 08-01			R 1/8	47.4		8.0		14	22.0	50	
PWT 08-02	12	21.0	R 1/4	50.4	21.0	10.0	22.7	14	6.0	24.0	50
PWT 08-03			R 3/8	51.4		11.0		17		38.0	50
PWT 08-04			R 1/2	54.4		14.0		21		50.0	25
PWT 10-01	10	17.6	R 1/8	51.3	17.6	8.0	20.3	17	6.0	35.0	25
PWT 10-02			R 1/4	54.3		10.0		17	37.0	25	
PWT 10-03			R 3/8	55.3		11.0		17	40.0	25	
PWT 10-04	12	21.0	R 1/2	58.3	21.0	14.0	22.7	21	8.0	63.0	25
PWT 12-01			R 1/8	57.2		8.0		19	54.0	25	
PWT 12-02			R 1/4	59.2		10.0		19	52.0	25	
PWT 12-03	12	21.0	R 3/8	60.2	21.0	11.0	22.7	19	9.0	53.0	25
PWT 12-04			R 1/2	63.2		14.0		21	66.0	25	