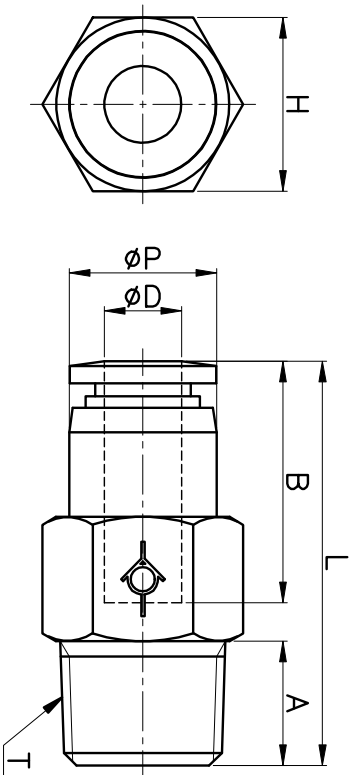


CVPC



MODEL	øD	øP	T	L	A	B	H (Hex)	WEIGHT (g)	BOX(EA)
CVPC 04-M5	4	10.0	M5*0.8p	31.4	3.6	14.8	10	11.0	100
CVPC 04-M6			M6*1.0p	30.4	4.6		10	11.0	100
CVPC 04-01	6	11.9	R 1/8	27.3	8.0	16.4	10	11.0	100
CVPC 06-01			R 1/8	32.5	8.0		12	16.0	100
CVPC 06-02			R 1/4	32.5	10.0		14	24.0	50
CVPC 08-01			R 1/8	34.9	8.0		14	21.0	50
CVPC 08-02			R 1/4	37.2	10.0		14	24.0	50
CVPC 10-03			R 3/8	56.3	11.0		22	35.0	20
CVPC 10-04	10	23.0	R 1/2	58.3	14.0	20.2	22	41.0	20
CVPC 12-03			R 3/8	62.2	11.0		24	40.0	20
CVPC 12-04			R 1/2	65.2	14.0		24	40.0	20